



GMT MONTHLY MEMBERSHIP PROGRESS REPORT

Results as of: 5/31/2017

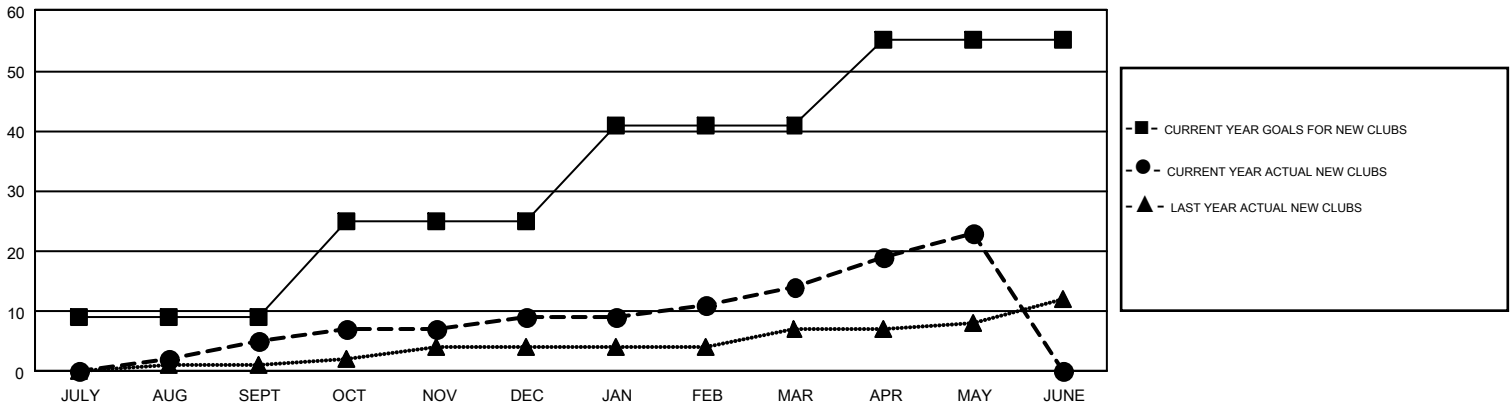
GMT Constitutional Area 1, Group E

GMT: HARVEY WHITLEY

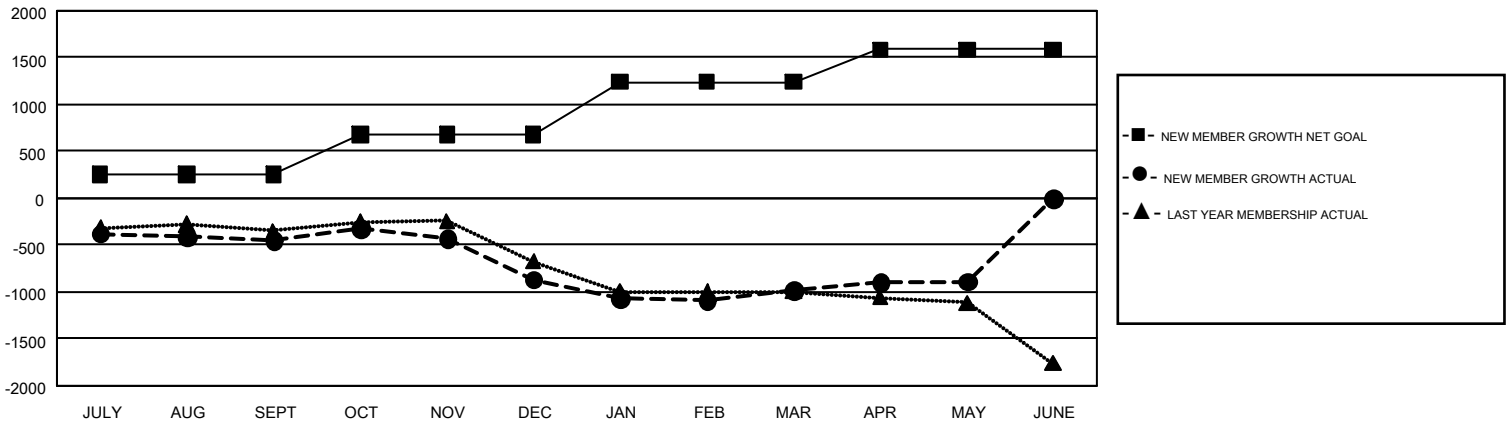
REPORT DOES NOT INCLUDE CLUBS IN UNDISTRICTED AREAS.

Clubs				Members			
RESULTS FOR 2016-2017				RESULTS FOR 2016-2017			
QUARTER	NEW CLUB GOAL	NEW CLUBS	DROPPED CLUBS	QUARTER	NEW MEMBER GROWTH NET GOAL (not reinstated or transfers)	NEW MEMBER GROWTH ACTUAL (not reinstated or transfers)	DROPPED MEMBERS ACTUAL (including transfers)
JULY/AUG/SEPT	9	5	7	JULY/AUG/SEPT	255	978	1,431
OCT/NOV/DEC	16	4	17	OCT/NOV/DEC	426	855	1,268
JAN/FEB/MAR	16	5	7	JAN/FEB/MAR	557	1,088	1,209
APR/MAY/JUNE	14	9	1	APR/MAY/JUNE	349	855	758

GOALS AND ACTUAL NEW CLUBS CUMULATIVE



GOALS AND ACTUAL MEMBERS CUMULATIVE



DROPPED CLUBS: 32	893 CLUBS OF 1,484 ADDED 1 OR MORE NEW MEMBERS	<u>GENDER DISTRIBUTION</u>
<u>DROPPED MEMBERS</u>		MALE 22,256 (64.66%)
DECEASED 524		FEMALE 12,164 (35.34%)
CLUB CANCELLED 223	CLICK HERE FOR CUMULATIVE MEMBERSHIP DATA	TOTAL FAMILY UNIT MEMBERS 6,248
OTHER 3,919		FAMILY MEMBERS PAYING HALF DUES 3,191
TOTAL 4,666		